

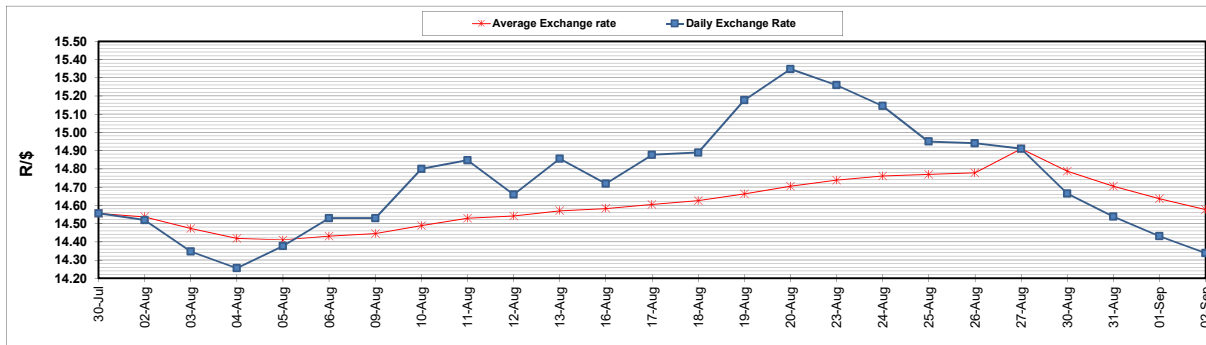
	PETROL 95 ULP	PETROL 93 ULP & LRP	DIESEL 0.05%	DIESEL 0.005%	ILL. PAR.
GAUTENG PUMP PRICE (SA c/l) AS FROM 01/09/2021	1,834.000	1,815.000	-	-	-
WHOLESALE PRICE (SA c/l) AS FROM 01/09/2021	-	-	1,548.980	1,552.380	948.488
SINGLE NATIONAL MAXIMUM RETAIL PRICE	-	-	-	-	1,197.000
BASIC FUEL PRICE - 02/09/2021 (SA c/l)	792.774	781.125	743.150	747.313	731.654
PRESS RELEASE CONTRIBUTION TO BFP 01/09/2021 - 02/09/2021 (SA c/l)	817.110	808.110	746.630	750.030	735.128
UNIT OVER/(UNDER) RECOVERY - 02/09/2021 (SA c/l)	24.336	26.985	3.480	2.717	3.474
AVERAGE BASIC FUEL PRICE 27/08/2021 - 02/09/2021	795.278	782.927	742.893	745.777	737.670
AVERAGE UNIT OVER/(UNDER) RECOVERY 27/08/2021 - 02/09/2021	28.120	31.471	18.137	18.053	6.458

### ANALYSIS MOVEMENT OF AVERAGE OVER/(UNDER) RECOVERY

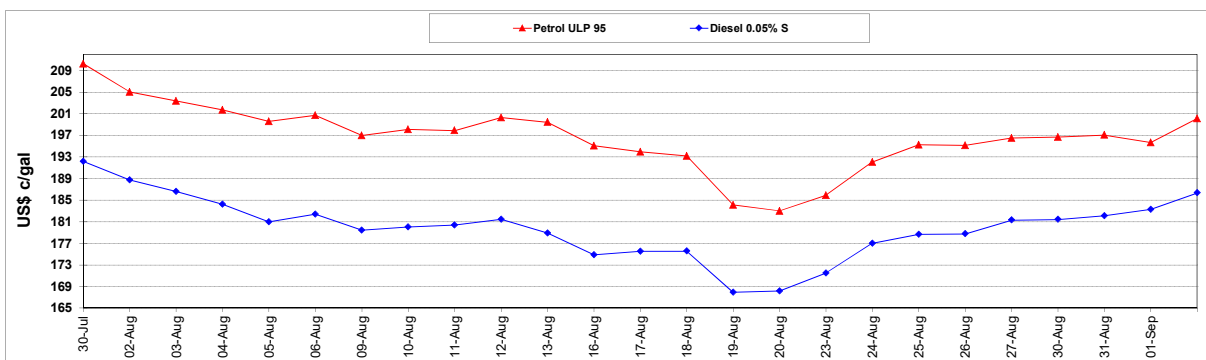
	PETROL 95	PETROL 93	DIESEL 0.05%	DIESEL 0.005%	ILL. PAR.
- MOVEMENT IN INTERNATIONAL PRODUCT PRICES	17.061	20.584	7.806	7.682	(3.800)
- MOVEMENT IN EXCHANGE RATE	11.059	10.887	10.331	10.371	10.258
AVERAGE UNIT OVER/(UNDER) RECOVERY 27/08/2021 - 02/09/2021	28.120	31.471	18.137	18.053	6.458

### R/\$ EXCHANGE RATE - (R/\$14.3375 - 02/09/2021)

#### EXCHANGE RATE USED IN BASIC FUEL PRICE



#### INTERNATIONAL PRODUCT PRICES OF BASKET USED IN BASIC FUEL PRICE



#### BASIC FUEL PRICE IN SA CENTS PER LITRE

